

## FOAMED POLYSTYRENE BOARDS WITH REDUCED WATER ABSORPTION AQUA EPS-P 300

### CHARAKTERISTIC

Foamed polystyrene boards AQUA EPS-P 300 are marked with code **EPS-EN 13163-T2-L1-W2-S2-P4-BS450-CS(10)300-DS(N)2-DS(70,90)1-DLT(2)5-WL(T)1-WD(V)3**, which confirms compliance with the Standard PN-EN 13163:2009.

These boards are produced with a modern automated method. AQUA boards are used for thermal insulation of building components, which are especially exposed to high moisture conditions.

**Available dimensions of boards:** 1230x615 [mm].

**Board thickness:** 50,60,70,80,100,110,120,130,140,150,160,170,180,190,200.

**Edge treatment:** milled edge (milled edge depth – 15 [mm]).

### APPLICATION

- foundation walls and plinths,
- underground parts of buildings, e.g. cellar walls,
- rooms with high moisture, e.g.: cold stores, washing rooms, mushroom-growing cellars,
- inverted roofs, e.g.: roof gardens, parking decks.
- terraces and industrial floors.

Foamed polystyrene boards AQUA EPS-P 300 cannot be applied in direct contact with substances having deteriorating effect on the polystyrene, e.g.: organic solvents such as propanone, benzene, spirits of turpentine, benzene.

### TECHNICAL DATA

#### Declared thermal resistance (RD) for board thickness

thickness [mm]															
50	60	70	80	90	100	110	120	130	140	150	160	170	180	190	200
thermal resistance (RD) [m²K/W]															
1,35	1,65	1,90	2,20	2,50	2,75	3,05	3,30	3,60	3,85	4,15	4,40	4,70	5,00	5,25	5,55

#### Dimensions and packaging way

Description	milled edge - dimensions of boards:1230 x615 [mm] , coverage area of a board – 0,729 [m²]															
	volume of packet, coverage area of a packet and number of boards in a packet according to board thickness															
Thickness [mm]	50	60	70	80	90	100	110	120	130	140	150	160	170	180	190	200
Number of boards in a packet [pcs.]	10	8	7	6	5	5	4	4	3	3	3	3	2	2	2	2
Volume of a packet [m³]	0,364	0,349	0,357	0,349	0,328	0,364	0,320	0,349	0,284	0,306	0,328	0,349	0,247	0,262	0,277	0,291
Coverage area of a packet [m²]	7,29	5,83	5,10	4,37	3,65	3,65	2,92	2,92	2,19	2,19	2,19	2,19	1,46	1,46	1,46	1,46

## Properties

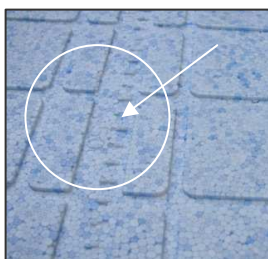
Types of foamed polystyrene boards		AQUA EPS-P 300	
Product code ((indicates declared levels or classes of product properties)		EPS-EN 13163-T2-L1-W2-S2-P4-BS450-CS(10)300-DS(N)2-DS(70,90)1-DLT(2)5-WL(T)1-WD(V)3	
Declared properties of the product according to PN-EN 13163:2009	Unit of measurement	Requirements or tolerances	
		Codes of classes or levels	Values
Thickness (dimensional tolerance class)	[mm]	T2	± 1
Length (dimensional tolerance class)	[mm]	L1	± 3
Width (dimensional tolerance class)	[mm]	W2	± 2
Rectangularity over the length and width (dimensional tolerance class)	[mm/mm]	S2	± 2/1000
Flatness (dimensional tolerance class)	[mm]	P4	± 5
Levels of bending strength	[kPa]	BS450	≥ 450
Compressive stress levels at 10% relative deformation	[kPa]	CS(10)300	≥ 300
Classes of dimensional stability under constant laboratory conditions <sup>1</sup>	[%]	DS(N)2	± 0,2
Levels of dimensional stability under specific conditions of temperature and humidity <sup>2</sup>	[%]	DS(70,90)1	≤ 1
Deformation level under conditions of stress load and temperature <sup>3</sup>	[%]	DLT(2)5	≤ 5
Long-term water absorption by total immersion	[%]	WL(T)1	≤ 1
Long-term water absorption by diffusion	[%]	WD(V)3	≤ 3
Declared thermal conductivity coefficient	[W/(m·K)]	[-]	≤ 0,034
Reaction to fire	from A to F	Euroclass	E

1 - test performed at 23°C, 50% relative moisture, 2 - test performed at 70°C for 48 hours, 3 - test performed at 80°C for 48 hours under a load of 20 kPa

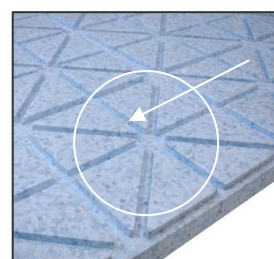
## HALLMARKS



- AQUA boards are formed in the mould, which makes them identical and the boards fit perfectly



- The AQUA boards are equipped with the gauge. This makes it easy to cut the board to the required dimensions



- The AQUA boards are equipped with dense network of tiny canals on their surfaces, which allows for fast and natural water flow and drainage

## ADMISSION

Declaration of compliance WE nr 18/2009 with Standard PN-EN 13163:2009.

## CONTACT

CUSTOMER SERVICE – OLSZTYN  
 ul. Towarowa 17A, 10-416 Olsztyn  
 e-mail: bokolsztyn@yetico.com

CUSTOMER SERVICE – GALEWICE  
 ul. Przemysłowa 5, 98-405 Galewice  
 e-mail: bokgalewice@yetico.com

CUSTOMER SERVICE – GORZÓW WLKP  
 ul. Mosiężna 14, 66-400 Gorzów Wielkopolski  
 e-mail: bokgorzow@yetico.com

Headquarter: YETICO S.A., ul. Towarowa 17A, 10-416 Olsztyn, phone. (+4889) 538 78 11, fax (+4889) 538 78 10, e-mail: yetico@yetico.com, www.yetico.com