



FOAMED POLYSTYRENE BOARDS WITH INCREASED THERMAL INSULATION PROPERTIES LEPSZY 0,033

CHARAKTERISTIC

Foamed polystyrene boards LEPSZY 0,033 are marked with code **EPS-EN 13163-T2-L2-W2-S2-P4-BS115-DS(N)2-DS(70,-)1-TR100**, which confirms compliance with the Standard PN-EN 13163:2009.

These boards are produced with a modern automated method.

APPLICATION

- thermal insulation of walls and ceilings from the bottom in Jointless Warming Systems, i.e. insulation performed in a light-wet method
- insulation of walls with cladding, ventilated by air slots
- thermal crown insulation made under the plaster as insulation of lintels and door frames
- insulation of ceilings made of reinforced concrete as lost planking
- insulation of steep roofs laid under the bearing structure

Foamed polystyrene boards LEPSZY 0,033 cannot be applied in direct contact with substances having deteriorating effect on the polystyrene, e.g.: organic solvents such as propanone, benzene, spirits of turpentine, benzene.

THREE TYPES OF LEPSZY BOARDS:



1. Production method: modern automated method. Edge treatment: milled edge.

- Available dimensions of board: 1012x514 [mm].
- Board thickness: 30,40,50,60,80,100,120 [mm].
- Edge treatment: milled edge (milled edge depth – 15 [mm]).



2. Production method: modern automated method. Edge treatment: square edge.

- Available dimensions of board: 996x498 [mm].
- Board thickness: 50,70,80,100,120,130,140,150,160,170,180,200 [mm].
- Edge treatment: square edge.



3. Production method: cutting expanded foam blocks. Edge treatment: square edge.

- Available dimensions of board: 996x498 [mm].
- Board thickness: from 10 [mm], with every 10 [mm] grading.
- Edge treatment: square edge.

TECHNICAL DATA

Declared thermal resistance (RD) for board thickness

Thickness [mm]																			
10	20	30	40	50	60	70	80	90	100	110	120	130	140	150	160	170	180	190	200
Thermal resistance (RD) [m ² K/W]																			
0,30	0,60	0,90	1,20	1,50	1,80	2,10	2,40	2,70	3,00	3,30	3,60	3,90	4,20	4,55	4,85	5,15	5,45	5,75	6,05

Dimensions and packaging way

Description	Edge treatment: milled edge - dimensions of board: 1012x514 [mm]. Edge treatment: square edge - dimensions of board: 996x498 [mm].																			
	Volume of a packet, coverage area of boards and number of boards in a packet (according to boards thickness)																			
Thickness [mm]	10	20	30	40	50	60	70	80	90	100	110	120	130	140	150	160	170	180	190	200
Number of boards in packet [pcs.]	60	30	20	15	12	10	8	7	6	6	5	5	4	4	4	3	3	3	3	3
Volume of packet (square edge) [m ³]	0,30	0,30	0,30	0,30	0,30	0,30	0,28	0,28	0,27	0,30	0,28	0,30	0,26	0,28	0,30	0,24	0,26	0,27	0,29	0,30
Volume of packet (milled edge) [m ³]	x	x	0,30	0,30	0,30	0,30	x	0,28	x	0,30	x	0,30	x	x	x	x	x	x	x	x
Coverage area of boards (square edge) [m ²]	29,95	14,95	9,95	7,45	5,95	4,95	3,95	3,47	2,98	2,98	2,48	2,48	1,98	1,98	1,98	1,49	1,49	1,49	1,49	1,49
Coverage area of boards (milled edge) [m ²]	x	x	9,95	7,46	5,97	4,97	x	3,48	x	2,98	x	2,48	x	x	x	x	x	x	x	x

Properties

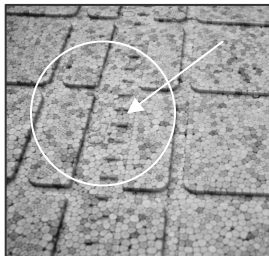
Types of foamed polystyrene boards		LEPSZY 0,033	
Product code ((indicates declared levels or classes of product properties)		EPS-EN 13163-T2-L2-W2-S2-P4-BS115-DS(N)2-DS(70,-)1-TR100	
Declared properties of the product according to PN-EN 13163:2009	Unit of measurement	Requirements or tolerances	
		Codes of classes or levels	Values
Thickness (dimensional tolerance class)	[mm]	T2	± 1
Length (dimensional tolerance class)	[mm]	L2	± 2
Width (dimensional tolerance class)	[mm]	W2	± 2
Rectangularity over the length and width (dimensional tolerance class)	[mm/mm]	S2	± 2/1000
Flatness (dimensional tolerance class)	[mm]	P4	± 5
Levels of bending strength	[kPa]	BS115	≥ 115
Classes of dimensional stability under constant laboratory conditions ¹	[%]	DS(N)2	± 0,2
Levels of dimensional stability under specific conditions of temperature and humidity ²	[%]	DS(70,-)1	≤ 1
Levels of tensile strength perpendicular to frontal planes	[W/(m·K)]	TR100	≥ 100
Declared thermal conductivity coefficient	[W/(m·K)]	[-]	≤ 0,033
Declared thermal resistance (thickness-dependent)	[m ² ·K/W]	marked on the package	
Reaction to fire	from A to F	Euroclass	E

HALLMARKS

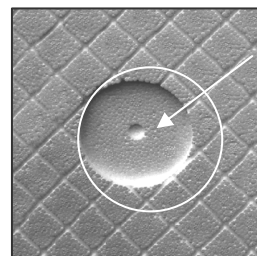
Production method: modern automated method. Edge treatment: milled edge.



- LEPSZY boards are formed in the mould, which makes them identical and the boards fit perfectly.
- Edge treatment: milled edge

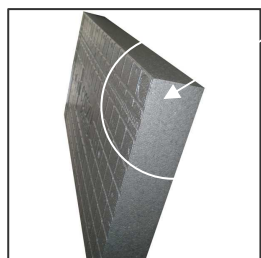


- The LEPSZY boards are equipped with the gauge. This makes it easy to cut the board to the required dimensions

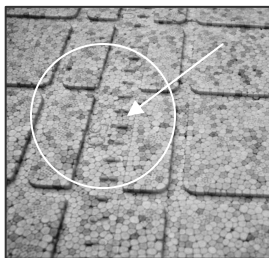


- marked wall attachment places

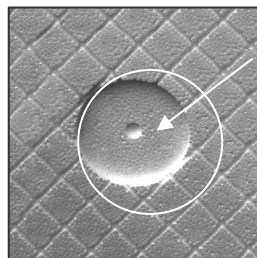
Production method: modern automated method. Edge treatment: square edge.



- LEPSZY boards are formed in the mould, which makes them identical and the boards fit perfectly.
- Edge treatment: square edge



- The LEPSZY boards are equipped with the gauge. This makes it easy to cut the board to the required dimensions



- marked wall attachment places

Production method: cutting expanded foam blocks. Edge treatment: square edge.



ADMISSION

Declaration of compliance EC NR 62/2009 and 81/2010 with Standard PN-EN 13163:2009.

CONTACT

CUSTOMER SERVICE – OLSZTYN
ul. Towarowa 17A, 10-416 Olsztyn
e-mail: bokolsztyn@yetico.com

CUSTOMER SERVICE – GALEWICE
ul. Przemysłowa 5, 98-405 Galewice
e-mail: bokgalewice@yetico.com

CUSTOMER SERVICE – GORZÓW WLKP
ul. Mosiężna 14, 66-400 Gorzów Wielkopolski
e-mail: bokgorzow@yetico.com

Headquarter: YETICO S.A., ul. Towarowa 17A, 10-416 Olsztyn, phone. (+4889) 538 78 11, fax (+4889) 538 78 10, e-mail: yetico@yetico.com, www.yetico.com