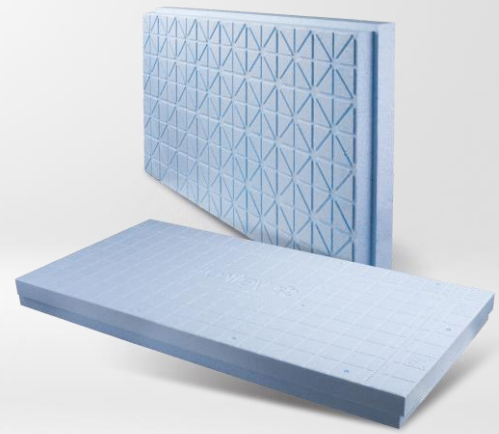




AQUA EPS-P 150

EPS boards with
lower water
absorption



λ
0,035
W/mK



working load
below 4,5 t/m²



insulation of partitions
exposed to water



low water
absorption



dimensional
stability

DESCRIPTION

AQUA EPS-P 150 polystyrene boards comply with the following standard code: EN 13163:2012

EPS-EN 13163-T1-L3-W2-Sb2-P5-BS200-CS(10)150-DS(N)2-DS(70,90)1-DLT(2)5-WL(T)1-WD(V)3.

They are produced with the use of automated technology.

Accessible sizes: 1230x615 [mm]

Board thickness: from 50 [mm], in increments of 10 [mm]

Edges' trim: overlapping (trim size – 15 [mm]).

ATTENTION

- The polystyrene boards should not come into direct contact with substances harmful to polystyrene, e.g. organic solvents such as acetone, benzene, turpentine or gasoline.
- The polystyrene boards should be stored protected from damages and exterior conditions.

SALES TO DISTRIBUTORS

Contact for distributors of building materials.
Information about where to buy products.

yetico.com/contact

SALES TO INVESTORS

Contact for investors (business and individual),
contractors, architects, and designers.

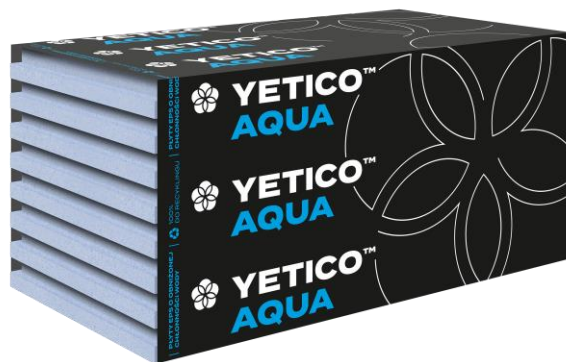
yetico.com/contact

YETICO™

BASIC USES

Thermal insulation of moist and water-exposed environments:

- foundation walls and plinths
- underground walls, e.g. cellar walls
- high moisture rooms, e.g.: cold stores, wash facilities, mushroom farms
- thermal insulation of surfaces under working load below 4,5 t/m²



INSTALLATION

- Boards produced by automated method require additional mechanical fastening above the level of the ground.

DOCUMENTS

- Declaration of performance no. 13-DoP-2018 with the standard code EN 13163:2012.
- Hygienic approval EPS-P no. HK/B/0921/01/2015.

THERMAL RESISTANCE – dependent on product thickness

Thickness [mm]																					
50	60	70	80	90	100	110	120	130	140	150	160	170	180	190	200	210	220	230	240	250	
Thermal resistance RD [m ² K/W]																					
1,40	1,70	2,00	2,25	2,55	2,85	3,10	3,40	3,70	4,00	4,25	4,55	4,85	5,10	5,40	5,70	6,00	6,25	6,55	6,85	7,10	



PACKAGING METHOD

Boards' covering area – 1215 x 600 [mm], 0,729 [m²]

Specification

Volume of packages, size of boards and number of items per package depend on board thickness

Thickness [mm]	50	60	70	80	90	100	110	120	130	140	150	160	170	180	190	200	210	220	230	240	250
Items per package	10	8	7	6	5	5	4	4	3	3	3	3	2	2	2	2	2	2	2	2	2
Package volume [m ³]	0,365	0,350	0,357	0,350	0,328	0,365	0,321	0,350	0,284	0,306	0,328	0,350	0,248	0,262	0,277	0,292	0,306	0,321	0,335	0,350	0,365
Covering area of package [m ²]	7,29	5,83	5,10	4,37	3,65	3,65	2,92	2,92	2,19	2,19	2,19	2,19	1,46	1,46	1,46	1,46	1,46	1,46	1,46	1,46	1,46

PARAMETERS

Board type

AQUA EPS-P 150

Product code (declared level or class properties of products)

EPS-EN 13163-T1-L3-W2-S_b2-P5-BS200-CS(10)150-DS(N)2-DS(70,90)1-DLT(2)5-WL(T)1-WD(V)3

Declared product properties conform to EN 13163:2012 standard	Measuring unit	Requirements or tolerances	
		Class or level codes	Values
Thickness (dimensional tolerance class)	[mm]	T1	1
Length (dimensional tolerance class)	[mm]	L3	3
Width (dimensional tolerance class)	[mm]	W2	2
Rectangularity over the length and width (dimensional tolerance class)	[mm/mm]	S _b 2	2/1000
Flatness (dimensional tolerance class)	[mm]	P5	5
Flexural strength levels	[kPa]	BS200	200
Compressive strength at 10 % deformation	[kPa]	CS(10)150	150
Classes of dimensional stability under constant laboratory conditions ¹	[%]	DS(N)2	0,2
Levels of dimensional stability under constant temperature and humidity conditions ²	[%]	DS(70,90)1	1
Deformation levels under specified compressive load and temperature ³	[%]	DLT(2)5	5
Water absorption level under total, long-term immersion - examination performed according to PN-EN 12087, item 7.2.2, method 2A - i.e. a sample immersed completely for a trial period of 28 days.	[%]	WL(T)1	1
Water absorption level under long-term diffusion	[%]	WD(V)3	3
Declared thermal conductivity rate	[W/(m·K)]	[-]	0,035
Reaction to fire	from A to F	Euroclass	E

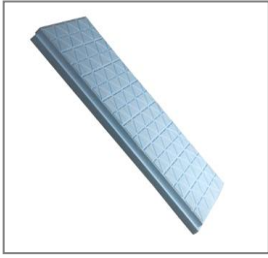
¹ measured in 23°C, 50% relative moisture,

² measured in temperature of 70°C for the duration of 48 hour,

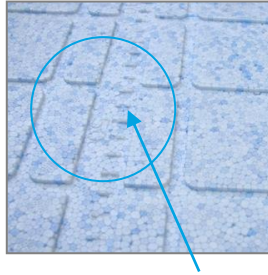
³ measured in temperature of 80°C for the duration of 48 hours, under 20 kPa load



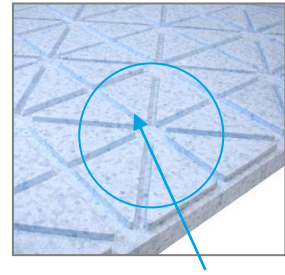
CHARACTERISTICS OF THE BOARDS



- every item is manufactured separately in a mold
- edges overlapping



- imprinted scale to facilitate the cutting of boards



- dense network of drainage channels

ADVANTAGE OF AUTOMATED TECHNOLOGY

Boards cut from their edges	Boards individually formed	What does it mean?
Lower cohesion	Higher cohesion	Higher cohesion means bigger density of granules. Therefore, less water permeates into foamy polystyrene granules. This results in much lower water absorption in long-term exposure to water.
Lack of drainage surface or milled drainage surface	Molded drainage surface	In automated technology all board with its drainage surface is molded. Boards cut from blocks either lack this surface or have it milled and therefore absorb water more easily.
Lower dimensional stability	Higher dimensional stability	In automated technology much less water vapor is used for production, and a ready-made board is put out. There is no tensile stress. All these result in dimensional stability acquired in a short time. In block technology the time span is extended by the seasoning of boards.





HEADQUARTERS

YETICO S.A.
ul. Towarowa 17a
10-416 Olsztyn

+48 89 538 78 11
yetico@yetico.com
www.yetico.com

CUSTOMER SERVICE

OLSZTYN
+48 89 538 78 51 / 52

GALEWICE
+48 62 783 80 89 / 25

GORZÓW WLKP.
+48 95 720 97 01 / 02

TARNOBRZEG
+48 539 609 072
+48 532 916 779

AQUA EPS-P 150